



# Sergé Xinix

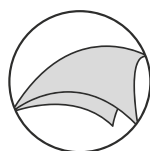
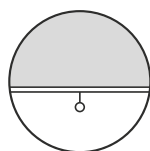
OF 0%

WKXXO

FABRIC CODE

Bedroom or boardroom, home theatre or classroom: if it needs darkening, Xinix does the job. The looks of a Sergé screen, the darkening performance of a pro.

Can be used both exterior and interior



Only suitable for zip-systems

# Sergé Xinix OF 0%

**WKXXO** FABRIC CODE

## Yarn

Technical specifications	Average Values	Standard
<b>Titer</b>	165 tex	ISO 1889 (2009)
<b>Weighted composition</b>	Glass 41.5%, PVC 58.5%	ISO 3801 (1977)
<b>Diameter</b>	0.38 mm	

## Fabric

<b>Type of fabric</b>	PVC-coated fiberglass fabric with a darkening coating	
<b>Weave pattern</b>	twill weave	
<b>Widths</b>	2100 mm	
<b>Roll length (nominally)</b>	40 m	

Technical specifications	Average Values	Standard
<b>Thickness</b>	0.6 mm	ISO 5084 (1996)
<b>Mass</b>	613 g/m <sup>2</sup>	ISO 3801-5 (1977)
<b>Fire resistance</b>	M1	NF P92-503 (1995)
	FR	NFPA 701 (2015)
<b>Breaking strength</b>	B1	DIN 4102 (1998)
	warp 310 daN, weft 200 daN	ISO 13934-1 (2013)
<b>Elongation at break</b>	warp 6,4%, weft 4.0%	ISO 13934-1 (2013)
<b>Tear resistance</b>	warp 9,7 daN, weft 11,0 daN	EN ISO 4674 part 1 method A (2016)
<b>Colorfastness (white excluded)</b>	blue scale grade $\geq$ 7	ISO 105-B02 (2014)
<b>Adhesion strength</b>	length direction 3.82 N/20 mm	ISO2411 (2017)
	width direction 4.40 N/20 mm	

## Processing

General - specifications are purely indicative and may not be considered as binding. Colors may vary from the samples shown.

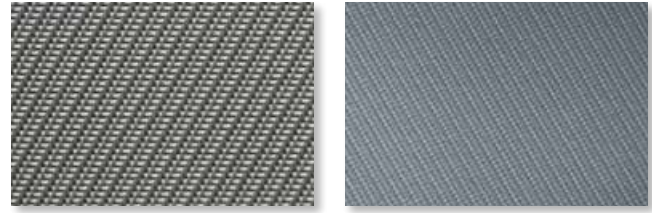
<b>Cutting</b>	crush or ultrasonic
<b>Welding</b>	thermal, HF, ultrasonic, sewing
<b>System</b>	only suitable for zip-systems
<b>Cleaning</b>	remove dust from the fabric surface, then wipe gently with a humid soft sponge while using a mild detergent

Copyright Helioscreen 2019. Registered trademark. A Helioscreen product.

**Our Xinix fabric darkens every room like a pro**

- Efficient room darkening
- Suitable for interior and exterior
- Class 4 against heat and glare
- Relatively low in weight
- Relatively thin

**108101 grey-white A / B**  
Width: 2100 mm



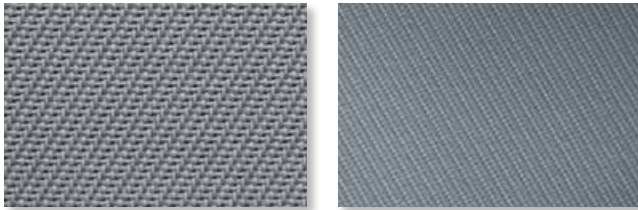
**Solar Heat & Light Control Properties**

	Ts	Rs	As	Tv	TVdiff	TVdir	Tuv	TVdif-h	Glare control
A	0.2	31.4	68.4	0.0	0.0	0.0	0.0	0.0	Class 4
B	0.2	31.1	68.7	0.0	0.0	0.0	0.0	0.0	Class 4

**gtot**

	A		B		C		D	
	ext.	int.	ext.	int.	ext.	int.	ext.	int.
A Values	0.15	0.53	0.11	0.53	0.06	0.47	0.06	0.28
A Classes	2	0	3	0	4	1	4	2
B Values	0.15	0.53	0.11	0.53	0.06	0.47	0.06	0.28
B Classes	2	0	3	0	4	1	4	2

**108108 grey A / B**  
Width: 2100 mm



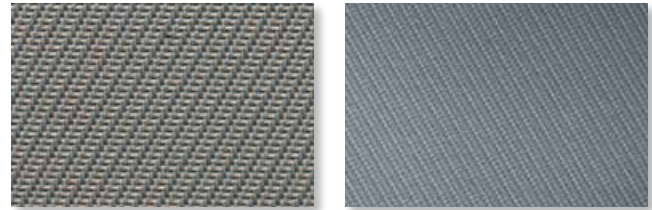
**Solar Heat & Light Control Properties**

	Ts	Rs	As	Tv	TVdiff	TVdir	Tuv	TVdif-h	Glare control
A	0.2	20.0	79.8	0.0	0.0	0.0	0.0	0.0	Class 4
B	0.2	32.2	67.6	0.0	0.0	0.0	0.0	0.0	Class 4

**gtot**

	A		B		C		D	
	ext.	int.	ext.	int.	ext.	int.	ext.	int.
A Values	0.17	0.60	0.13	0.59	0.07	0.50	0.07	0.29
A Classes	2	0	3	0	4	0	4	2
B Values	0.14	0.52	0.11	0.53	0.06	0.46	0.06	0.28
B Classes	3	0	3	0	4	1	4	2

**108112 grey-sand A / B**  
Width: 2100 mm



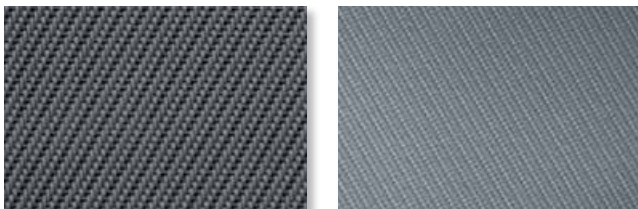
**Solar Heat & Light Control Properties**

	Ts	Rs	As	Tv	TVdiff	TVdir	Tuv	TVdif-h	Glare control
A	0.2	25.0	74.8	0.0	0.0	0.0	0.0	0.0	Class 4
B	0.2	31.0	68.8	0.0	0.0	0.0	0.0	0.0	Class 4

**gtot**

	A		B		C		D	
	ext.	int.	ext.	int.	ext.	int.	ext.	int.
A Values	0.16	0.57	0.12	0.57	0.07	0.49	0.06	0.29
A Classes	2	0	3	0	4	1	4	2
B Values	0.15	0.53	0.11	0.53	0.06	0.47	0.06	0.28
B Classes	2	0	3	0	4	1	4	2

**108118 grey-black A / B**  
Width: 2100 mm



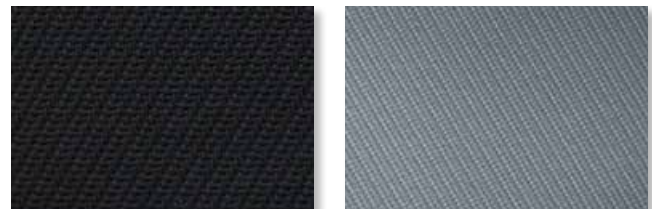
**Solar Heat & Light Control Properties**

	Ts	Rs	As	Tv	TVdiff	TVdir	Tuv	TVdif-h	Glare control
A	0.2	15.2	84.6	0.0	0.0	0.0	0.0	0.0	Class 4
B	0.2	31.1	68.7	0.0	0.0	0.0	0.0	0.0	Class 4

**gtot**

	A		B		C		D	
	ext.	int.	ext.	int.	ext.	int.	ext.	int.
A Values	0.18	0.62	0.13	0.62	0.08	0.52	0.07	0.29
A Classes	2	0	3	0	4	0	4	2
B Values	0.15	0.53	0.11	0.53	0.06	0.47	0.06	0.28
B Classes	2	0	3	0	4	0	4	2

**118118 black A / B**  
Width: 2100 mm



**Solar Heat & Light Control Properties**

	Ts	Rs	As	Tv	TVdiff	TVdir	Tuv	TVdif-h	Glare control
A	0.0	6.2	93.8	0.0	0.0	0.0	0.0	0.0	Class 4
B	0.1	29.5	70.4	0.0	0.0	0.0	0.0	0.0	Class 4

**gtot**

	A		B		C		D	
	ext.	int.	ext.	int.	ext.	int.	ext.	int.
A Values	0.20	0.68	0.15	0.66	0.08	0.55	0.08	0.30
A Classes	2	0	2	0	4	0	4	2
B Values	0.15	0.54	0.11	0.54	0.06	0.47	0.06	0.28
B Classes	2	0	3	0	4	1	4	2